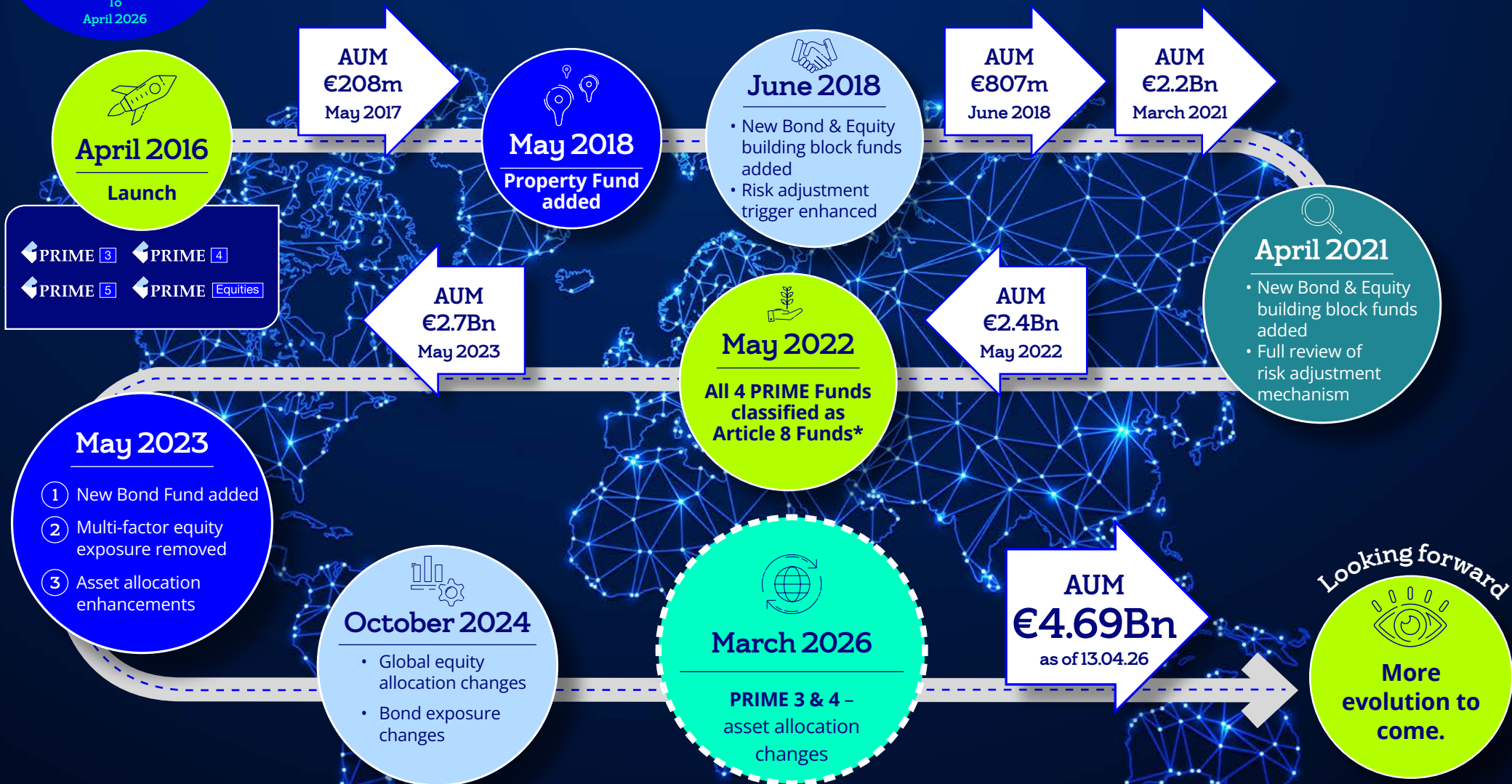




A decade of evolution. A tradition of reliability.



\*Article 8 or Light Green Funds promote environmental or social characteristics (although not exclusively) and invest in companies that follow good governance practices.

Source: Bank of Ireland Life, Bank of Ireland Investment Markets, March 2026

**Warning: Past performance is not a reliable guide to future performance.**  
**Warning: The value of your investment may go down as well as up.**  
**Warning: These funds may be affected by changes in currency exchange rates.**  
**Warning: If you invest in these funds, you may lose some, or all, of the money you invest.**



To find out more about the PRIME Funds range, talk to the Advisor in your local Bank of Ireland branch or visit [Fund Centre](#)

**Warning: Past performance is not a reliable guide to future performance.**

**Warning: The value of your investment may go down as well as up.**

**Warning: These funds may be affected by changes in currency exchange rates.**

**Warning: If you invest in these funds, you may lose some, or all, of the money you invest.**

Terms and conditions apply. Exit tax (up to 38% currently) applies to gains on life assurance investment policies. A Government levy (currently 1% of the premium amount) applies to all premiums paid to a life assurance policy.

While great care has been taken in its preparation, this information is of a general nature and should not be relied on in relation to specific issues without appropriate financial, insurance, investment or other professional advice. This content is for information purposes only and does not constitute an offer or recommendation to buy or sell any investment or to subscribe to any investment management or advisory service. In the event of any changes in taxation or legislation, New Ireland may amend the terms and conditions of the relevant contract to take account of any such changes. If there is any conflict between this document and the policy conditions, the policy conditions will apply.

Bank of Ireland trading as Bank of Ireland Investment Markets is regulated by the Central Bank of Ireland. A member of Bank of Ireland Group.

Life assurance and pension products are provided by New Ireland Assurance Company plc trading as Bank of Ireland Life. New Ireland Assurance Company plc trading as Bank of Ireland Life is regulated by the Central Bank of Ireland. Member of Bank of Ireland Group. Bank of Ireland Life may hold units in the funds mentioned on its own account and some of the underlying funds may hold shares in Bank of Ireland from time to time.

Advice on Bank of Ireland Life products is provided by Bank of Ireland. Bank of Ireland, trading as Bank of Ireland Insurance & Investments or Bank of Ireland Premier, is regulated by the Central Bank of Ireland. Bank of Ireland is a tied agent of New Ireland Assurance Company plc for life assurance and pensions business. Member of Bank of Ireland Group.